



ACNU08
2008 NATIONAL
CONGRESS OF THE
AUSTRALIAN COUNCIL
FOR NEW URBANISM
Brisbane



6th – 9th February, 2008

Collaborative Design Processes in Australia and Internationally

With input from preceding NCI Course and EBD Masterclass



Chip Kaufman, Ecologically Sustainable Design
Melbourne, esdesign@netspace.net.au

Ecologically Sustainable Design Pty Ltd, Melbourne

CONTENTS

Purpose

**Suite of Processes, Internationally, with
Australian adaptations, and Case Studies**
(and with input from preceding NCI Course and EBD Masterclass)

History

Key Success Factors

Vulnerabilities

Ecologically Sustainable Design Pty Ltd, Melbourne

Purpose

**“For every complex and difficult problem there is an
easy solution, and it is wrong.”** ...H. L. Mencken

**Stakeholders are defacto clients, because they're the end users.
People as important as the plan.**

Conventional 'Public Consultation' is often self-defeating.

**A solve-one-problem-at-a-time approach will only paint the the
complex inter-dependent whole into a corner.**

Interlocking problems usually require interlocking solutions.

**Collaboratively test, by means of indicative designing, where, when,
how, and therefore whether a proposition and its related Objectives
can be achieved, for a specific place.**

Enable the Power of Reason to prevail.

Ecologically Sustainable Design Pty Ltd, Melbourne

Enquiry by Design

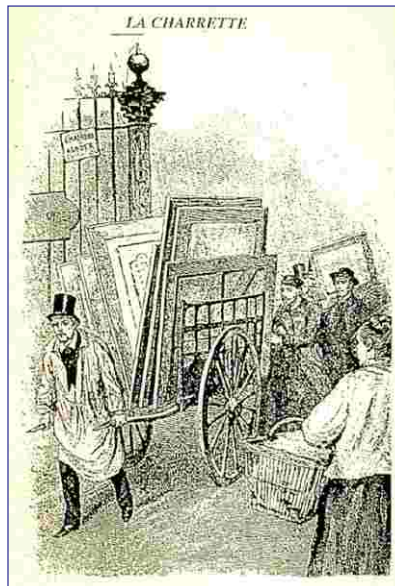
(this term generally covers the suite of processes)

Enquiry by Design is a transparent, multi-day, stakeholder-collaborative, design-based process for resolving complex and controversial urban projects. Because the factors influencing urban development, sustainability and amenity are so inter-dependent, Enquiry by Design deals at the same time with all environmental, economic and social issues, and at all scales ranging from architecture to the sub-region. Before the process, EBD outputs are usually positioned as non-binding, until we have determined whether they work or not, by means of this method.

Simultaneously Interactive
instead of
Sequentially Reactive

This writing courtesy of ESD

Ecologically Sustainable Design Pty Ltd, Melbourne

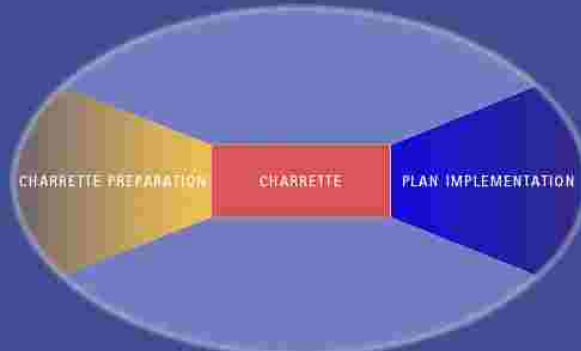


Alexis LeMaistre, 1889

Ecologically Sustainable Design Pty Ltd, Melbourne

The NCI Dynamic Planning Process

- A three-part process for achieving transformative change in public and private planning efforts
- The overall process in which the charrette is the transformative event



www.charretteinstitute.org

Charrette

(5 days usually, other EBD processes equally integrative)

Charrettes for public, when project requires very significant citizen participation, included in specific sessions

Introductory Public Meeting includes Public Consultation, but only after an Introductory Presentation clarifying the whole project context and opportunities



Ecologically Sustainable Design Pty Ltd, Melbourne



On-site designing and consultation is common across all EBD's



**Set up the design studio & Project Briefing
Study & tour the site, Government Agencies Meeting/s**



Ecologically Sustainable Design Pty Ltd, Melbourne

**Days 3 - 4 usually Saturday & Sunday
(more consultative)**



**Community and/or Stakeholder
Consultation for Charrettes**

**Topical and/or area-specific meetings
'Open Studio' sessions for the public
Meetings with landowners**

Ecologically Sustainable Design Pty Ltd, Melbourne

Day 5 (more design/production)

In-house Iterative Design Resolution iterative with Measuring of Outcomes, Preparation of Concluding Public Presentation, common to all EBD approaches



Ecologically Sustainable Design Pty Ltd, Melbourne

Concluding Meeting

(time afterwards for review and possible revisions)

When Charrette, it's public. When other EBD's, this meeting may be for invited stakeholders only, depends on consultation needs of the project



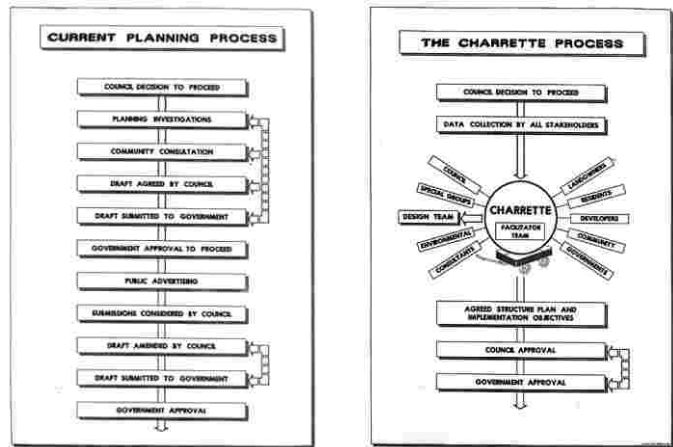
Sufficient detail (at all scales) to enable participants to see, understand, and test proposals, in terms of where, when, how and whether

Ecologically Sustainable Design Pty Ltd, Melbourne



ACNU08 Mastersclass and NCI Course

How EBDs relate to normal approval processes.



Often in Oz, the normal approval process does not support EBD, despite its demonstrated benefits.

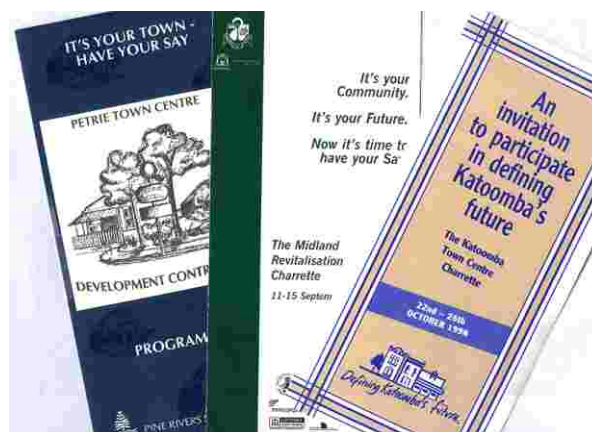
High Risk, High Return

**Preparation is Crucial,
or Risk Catastrophe**



Ecologically Sustainable Design Pty Ltd, Melbourne

**EBD/Charrette announcements
only part of the ramping up toward the event**



Ecologically Sustainable Design Pty Ltd, Melbourne

Charrette/EBD brochures (10-20 pages) instrumental in informing, promoting and sustaining momentum



Post-EBD implementation is crucial, and by no means dependable, yet.

Ecologically Sustainable Design Pty Ltd, Melbourne

History First New Urbanist Charrettes, such as for Seaside, Florida (before NU had its name) in early 1980's, in response to need for a holistic collaborative response to the straightjacket of sprawl regulation. Largely pioneered by DPZ.

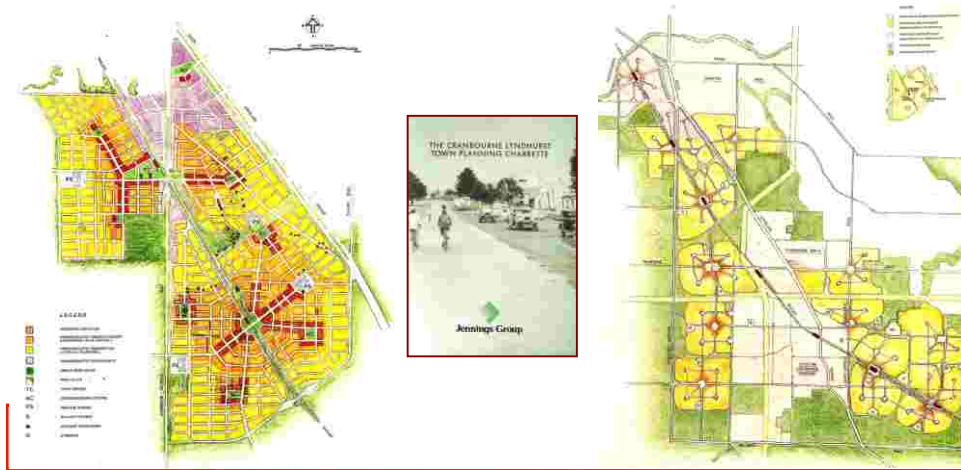


History

Congress for New Urbanism established in 1992 (www.cnu.org), Charter signed in 1994

Practice expands beyond US by early 1990's, with ESD introducing process to Australia in 1992 and NZ in 1996

Cranbourne Charrette, Melbourne, 1992



Beacon Cove Charrette, 1992

Port Melbourne, Victoria, led by Paul Murrain with Wendy Morris at State as 'client' and 'champion' to implement A controversial government-owned infill site that catalysed medium rise development in inner Melbourne. New public waterfront and village node.



Best selling development in Melbourne for 5 years



Ecologically Sustainable Design Pty Ltd, Melbourne

History

2003: National Charrette Institute (NCI) established

2004: Urban Design Alliance forms in Brisbane, and leads EBDs

2005: Andres Duany leads eleven simultaneous Mississippi Renewal Charrettes in response to Hurricane Katrina

Now NU and EBDs are becoming basis (at least in part) for informing growth management and healthier communities across many countries, and hopefully for Climate Crisis

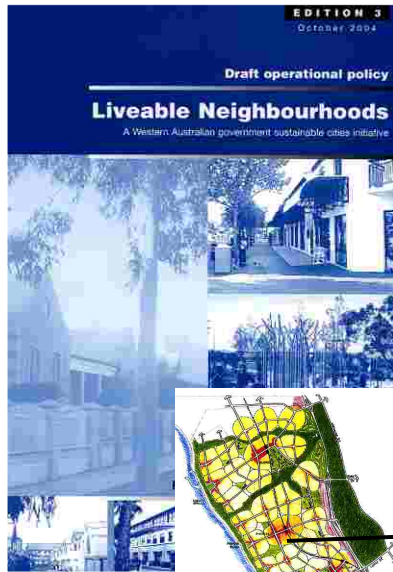
Processes have co-evolved in North America and Australia, with differing adaptations

Ecologically Sustainable Design Pty Ltd, Melbourne

Contentious Coomera Charrette on Gold Coast Railway, 1995



Ecologically Sustainable Design Pty Ltd, Melbourne



Jindalee Design Workshop, 1996

Liveable Neighbourhoods Code

State-wide Code, WA www.wapc.wa.gov.au

CNU 2001 Charter Award winner

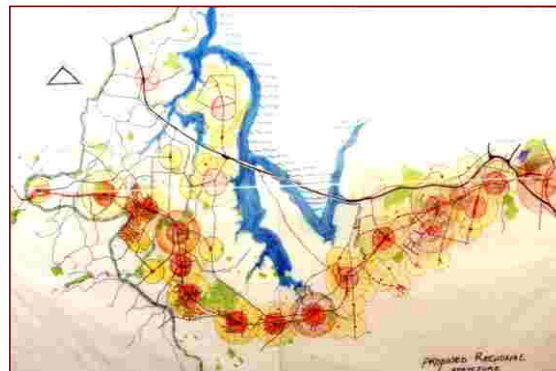
Code Design Elements

- E1. Community Design
- E2. Movement Network
- E3. Lot Layout
- E4. Public Parkland
- E5. Urban Water Management
- E6. Utilities
- E7. Activity Centres & Employment
- E8. Schools



Ecologically Sustainable Design Pty Ltd, Melbourne

Sustainable Design Training Workshops



Waitakere WSDTW, in preparation for New Lynn Charrette
with joint ESD/Council Team, NZ's first in 1996

Newcastle-Lake Macquarie SDTW, 1996

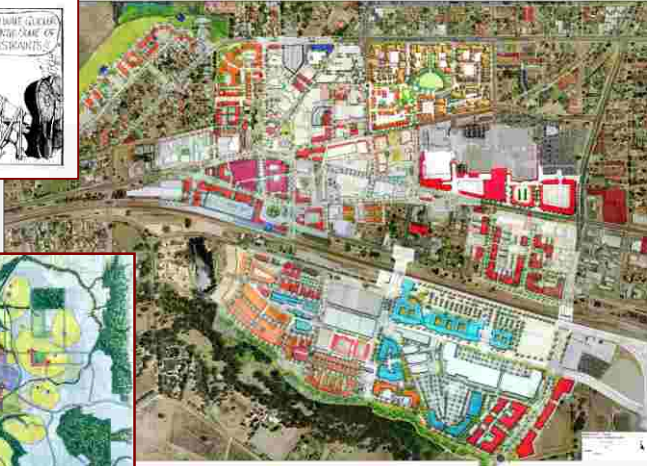
Bill Grant, CEO Newcastle (now Chair ULDA), Jason Waziak, Trevor Allen, et al

Ecologically Sustainable Design Pty Ltd, Melbourne

Midland Revitalisation Charrette, 1997 • Enquiry by Design, 2007



1997 Charrette Citywide Plan



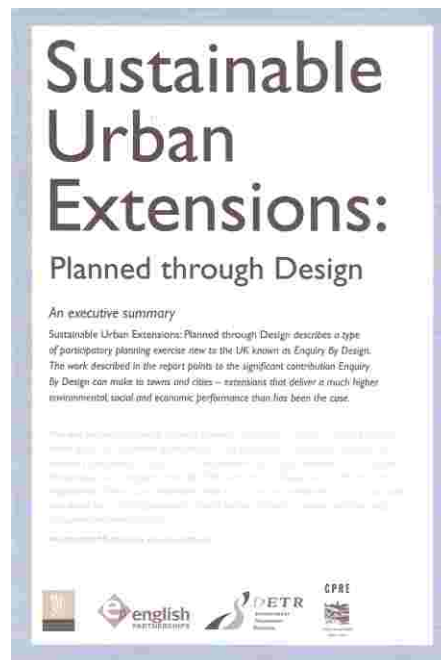
2007 City Centre Plan

Ecologically Sustainable Design Pty Ltd, Melbourne

1999: ESD advances Enquiry by Design for UK, with success of Northampton EBD (now partly built as Upton) resulting in imprimatur of both Government and the Prince



EBD Plan for Northampton Urban Extension



Ecologically Sustainable Design Pty Ltd, Melbourne

2008 UK Royal Town Planning Institute's National Sustainable Communities Award

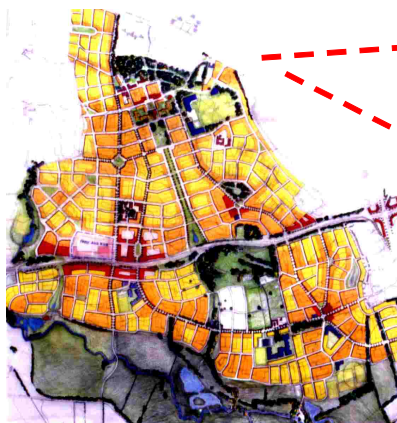


Upton, UK, born of an EBD, and a recognised sustainability exemplar



Ecologically Sustainable Design Pty Ltd, Melbourne

Is this UK 'pedagogical' and non-binding approach a model for enabling NU/EBDs more widely? Is this a means of fusing and further enlivening the NCI Course and Mastersclass?



EBD Plan for Northampton Urban Extension

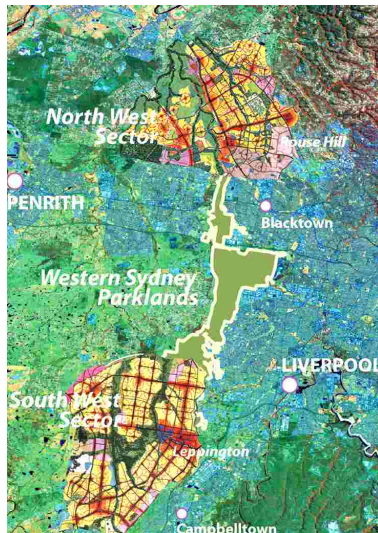


VERY LONG - TERM TOWNS & NEIGHBOURHOODS STRUCTURE
Northampton Urban Extension
© Ecologically Sustainable Design Pty Ltd, Melbourne

Ecologically Sustainable Design Pty Ltd, Melbourne

Urban Land Release, 2004

Western Sydney, NSW



CNU 2005 Charter Award winner

State Government-led large-scale sustainable regional planning initiative for two new major city regions.

Born of 2 week-long EBDs led by Evan Jones as NSW Director of Sydney Strategy, each involving about 80 stakeholders, who collaboratively designed for 2 of the five days with consultant design facilitators

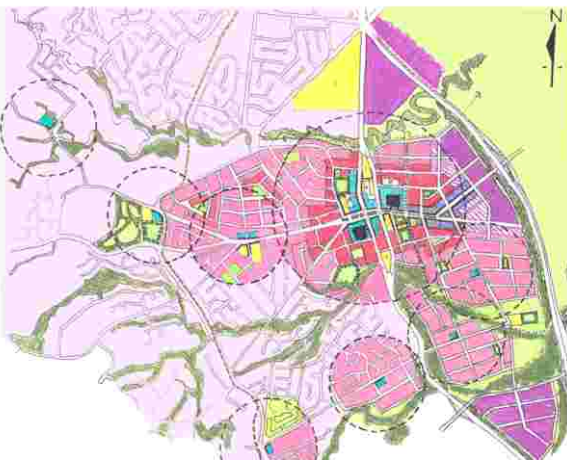
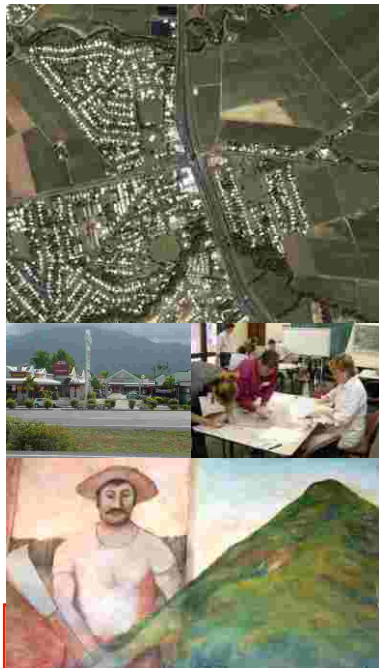
Growth Centres Commission established; innovative infrastructure funding mechanisms set up; mixed use transit-supportive development must be delivered.

Update coming from Stephanie Barker during ACNU08



Ecologically Sustainable Design Pty Ltd, Melbourne

Edmonton EBD, Cairnes, sponsored by QT, 2007



Ambergate Bussleton WA Design Workshop, 2007

Annand Alcock Urban Design, Lead Consultant



Ecologically Sustainable Design Pty Ltd, Melbourne

Australian Process Adaptations

(not necessarily Australia-wide, but at least done by ESD)

Scoping Workshops, to inform project approaches

Enquiries by Design (not Charrettes), when for key stakeholders but not public, during which stakeholders also design in facilitated teams (Western Sydney Urban Land Release)

Joint Client/Consultant Teams, to better engage and 'skill up' client staff/implementers, to reduce consultant costs, and to augment implementation

Sustainable Design Training Workshops for Government and others who want to internalise these skills (Waitakere SDTW produces many of Auckland's leading NU designers/leaders)

Ecologically Sustainable Design Pty Ltd, Melbourne

Key EBD Success Factors (not there yet)

- 1. Inherent legitimacy**
- 2. EBD Objectives**
- 3. Transparency**
- 4. Required outcomes specified**
- 5. Sufficient preparation**
- 6. Sufficient existing conditions information/drawings/aerials**
- 7. Client commitment to support the outcomes (if worthy) over the long haul, and/or a local 'Champion'**
- 8. Right team with technical, consultation and collaboration skills, and no conflicts of interest**

Ecologically Sustainable Design Pty Ltd, Melbourne

EBD Vulnerabilities

Risk of preparation insufficiencies, including engaging stakeholders to participate

Implementation Challenges, when Charrette leaders are remote

Risks of lost continuity in project implementation

Perceived Conflicts of Interest, when developer funded

Ecologically Sustainable Design Pty Ltd, Melbourne

Should we be enabling NU and EBDs, Systemically?

Ecologically Sustainable Design Pty Ltd, Melbourne

