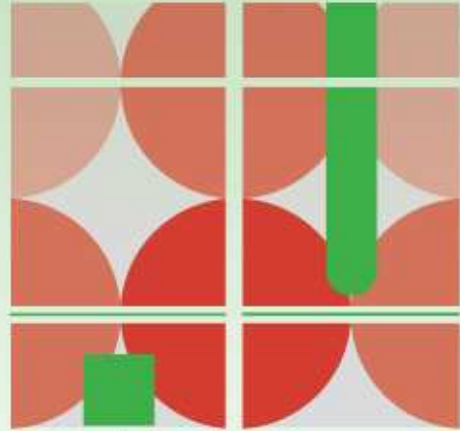


ACNU08



Brisbane

**2008 NATIONAL
CONGRESS OF THE
AUSTRALIAN COUNCIL
FOR NEW URBANISM**

6th – 9th February, 2008



new towns

DESIGN DIRECTOR
SUSANNE
PINI





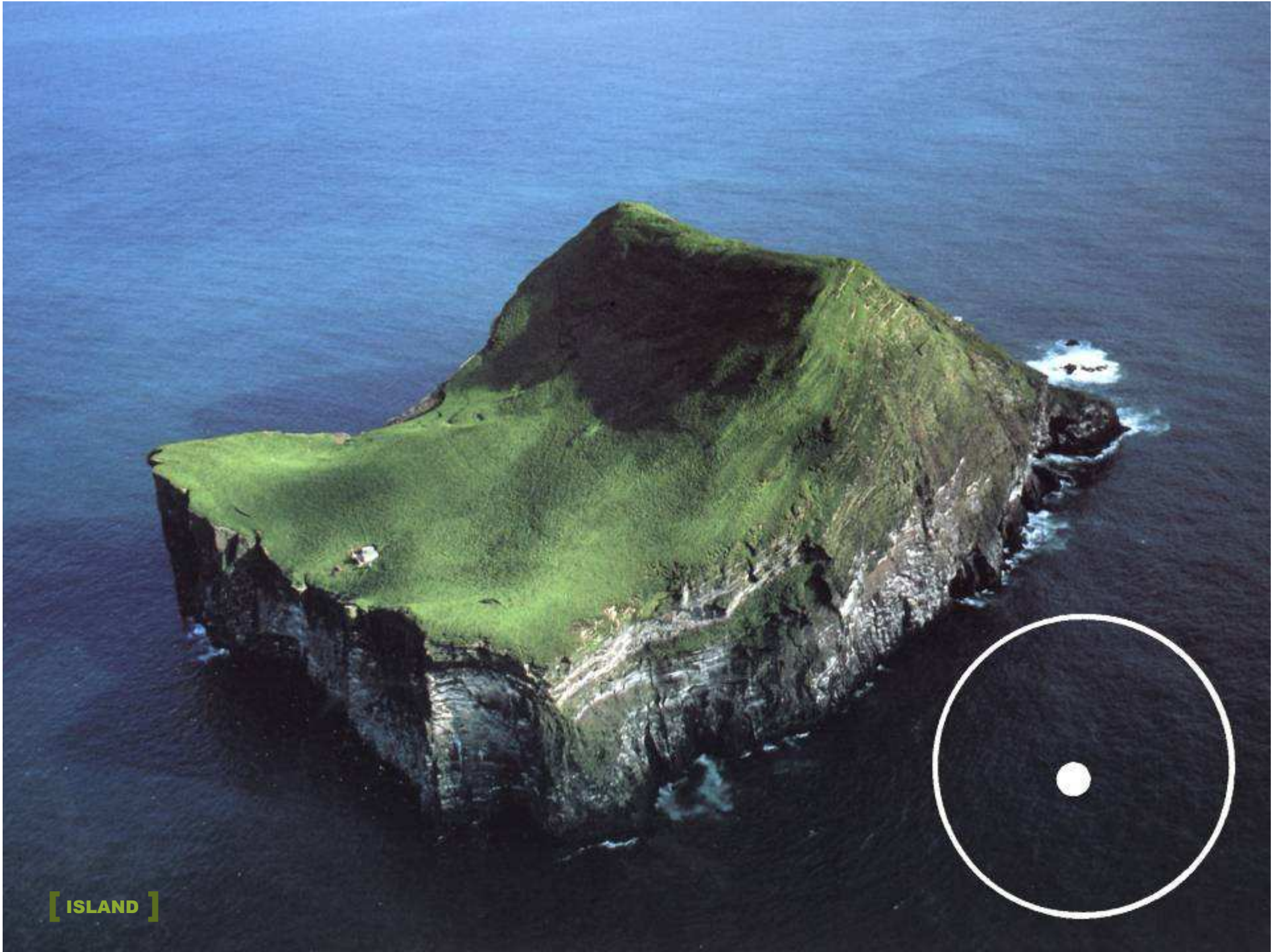
“through a battery of increasingly predatory forms, shopping has been able to colonise – even replace – almost every aspect of urban life” REM KOOLHAAS



[SHOPPING CENTRE]



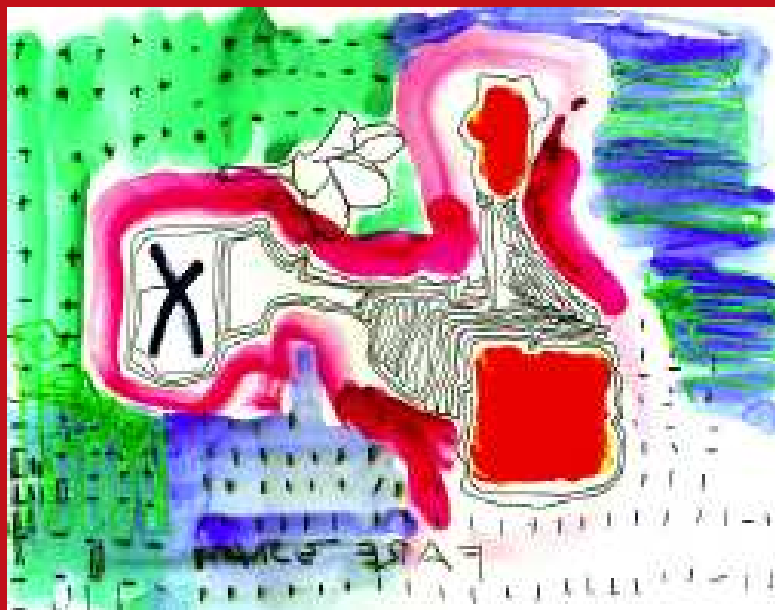
[TOWN]



[ISLAND]



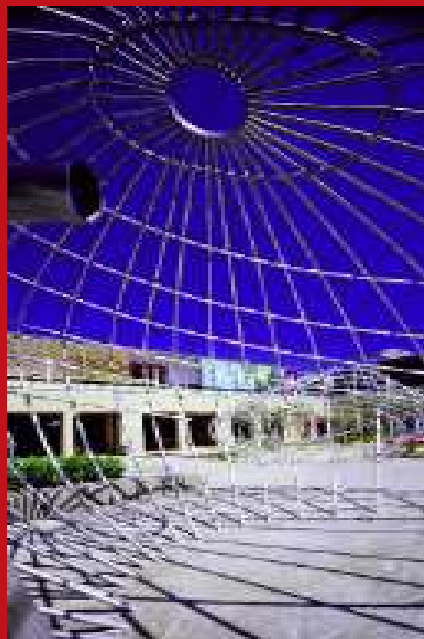
[ERINA FAIR]





[ERINA FAIR]





[ERINA FAIR]

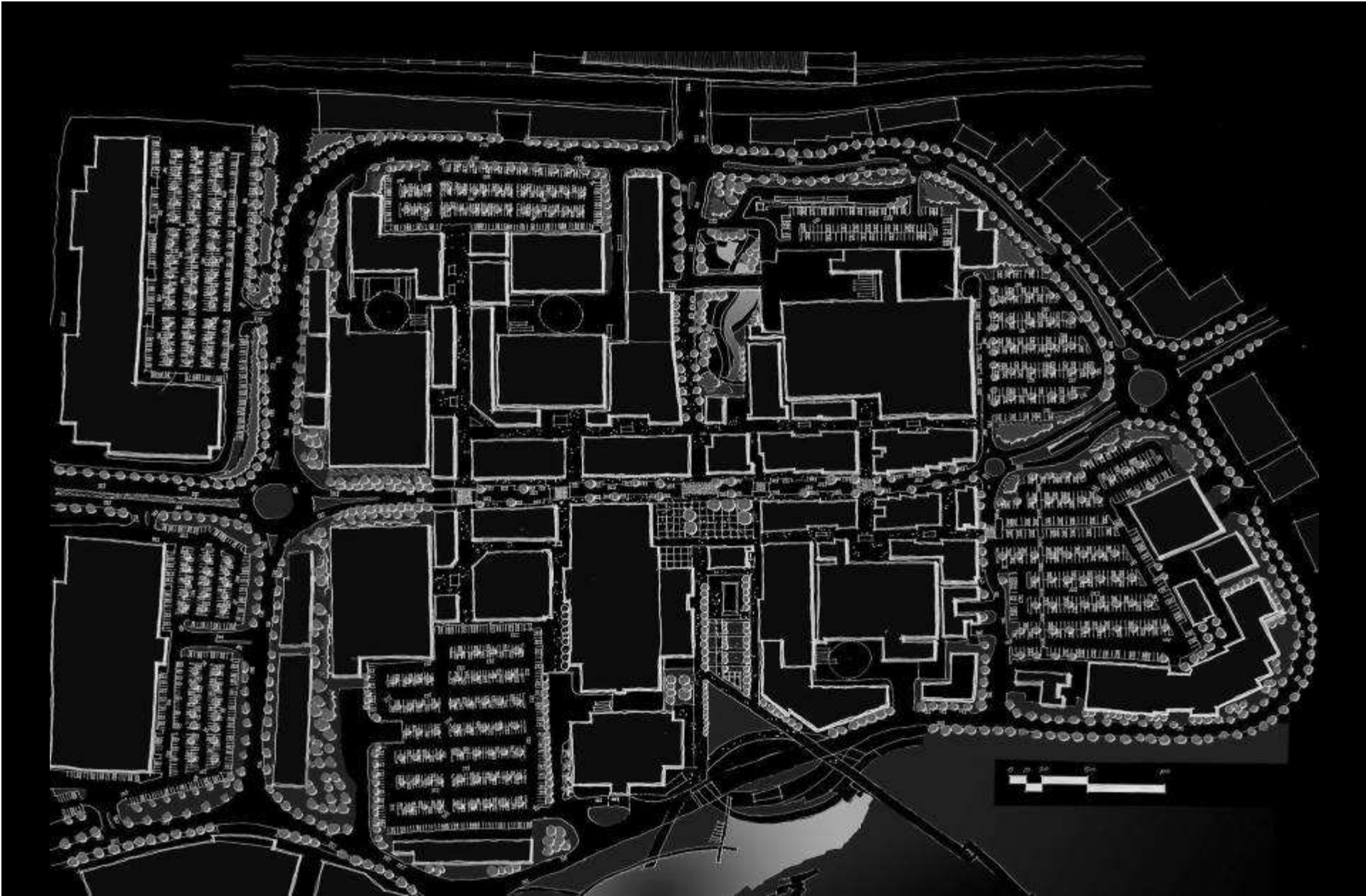


[ERINA FAIR]



[ZONE]





[ORION, SPRINGFIELD]

esd strategies

concept for an esd education centre

esd panels generate power for centre
natural ventilation
live embodied energy materials with low embodied energy
environmental strategies for collecting, storing and using water
solar panels generate power for centre
operational processes
green roofs / terraces with vegetation
Recharge water tanks

Green Star categories
management
indoor environment quality
energy
water
materials
land use and ecology
provisions
innovation

Rice Doolery is a member of the Green Building Council Australia

facade articulation
facade articulation
facade articulation
facade articulation

verticality of form, materials wrap down and around perimeter to blur the boundary between building, landscape, nature and sky

verticality and form materials wrap down and around perimeter to blur the boundary between building, landscape, nature and sky

verticality and form materials wrap down and around perimeter to blur the boundary between building, landscape, nature and sky

form and void
entry spaces, outdoor rooms
void cannot exist without form to create and hold it
regular sculptural objects defined by continuity of materials
enhanced spatial experience

roof elements
ecological qualities
regular roof form defines space
blends light to engage user with the elements
materials and elements in their natural spaces a lot of form
defining edges
blending different edges

awnings
expressed individually and collectively in the particular environment they serve
blending and engaging elements create and define spaces to respond to local and public needs in a playful manner to encourage engagement
awnings protect the spaces from the sun where required
awnings structure is either expressed or hidden in the response details

tenancy spaces
defining elements spaces at important nodes
use of formal opportunities to express their identity through structure and participation to make their space unique and clear

materials
environmentally friendly
use of natural materials
natural materials
natural materials
natural materials

landscaping
blending which extends landscape to the vertical planes, landscaping as building form, links in the landscape plane that the boundaries between what is natural and constructed, made and organic, building form and landscape

landscaping as an experience, engaged landscape planes allow for trees to be planted, and create pockets of green space that can be entered and enjoyed.

lighting
natural light
blends energy and creates a more pleasant environment with connections to the outside
artificial light
sets an experience where colours and light blend with the user
at night the character of space changes as the sky becomes a back lighting user

spatial qualities
blending of boundary between indoors and outdoors
blends flow through and connect spaces
blending spaces between different zones
blending spaces
blending of light and shade
blending of material selection (keeping original quality of materials without altering their form)
promotes connection of users and visitors
blending spaces between different zones
blending spaces
blending of light and shade
blending of material selection (keeping original quality of materials without altering their form)
promotes connection of users and visitors

dominant roof expression
simple + effective architectural expression

expressive + simple awning device
for scale, entries, facade articulation

Recognisable E.S.D principles
Ventilation
Light
water

simple material palette
natural
warm
robust

Building Section
Wrapping
Folding
Continuity
Active

Integrate landscaping into experience of building – use as highlights + art

Form and Void
Lightweight space + details
edges

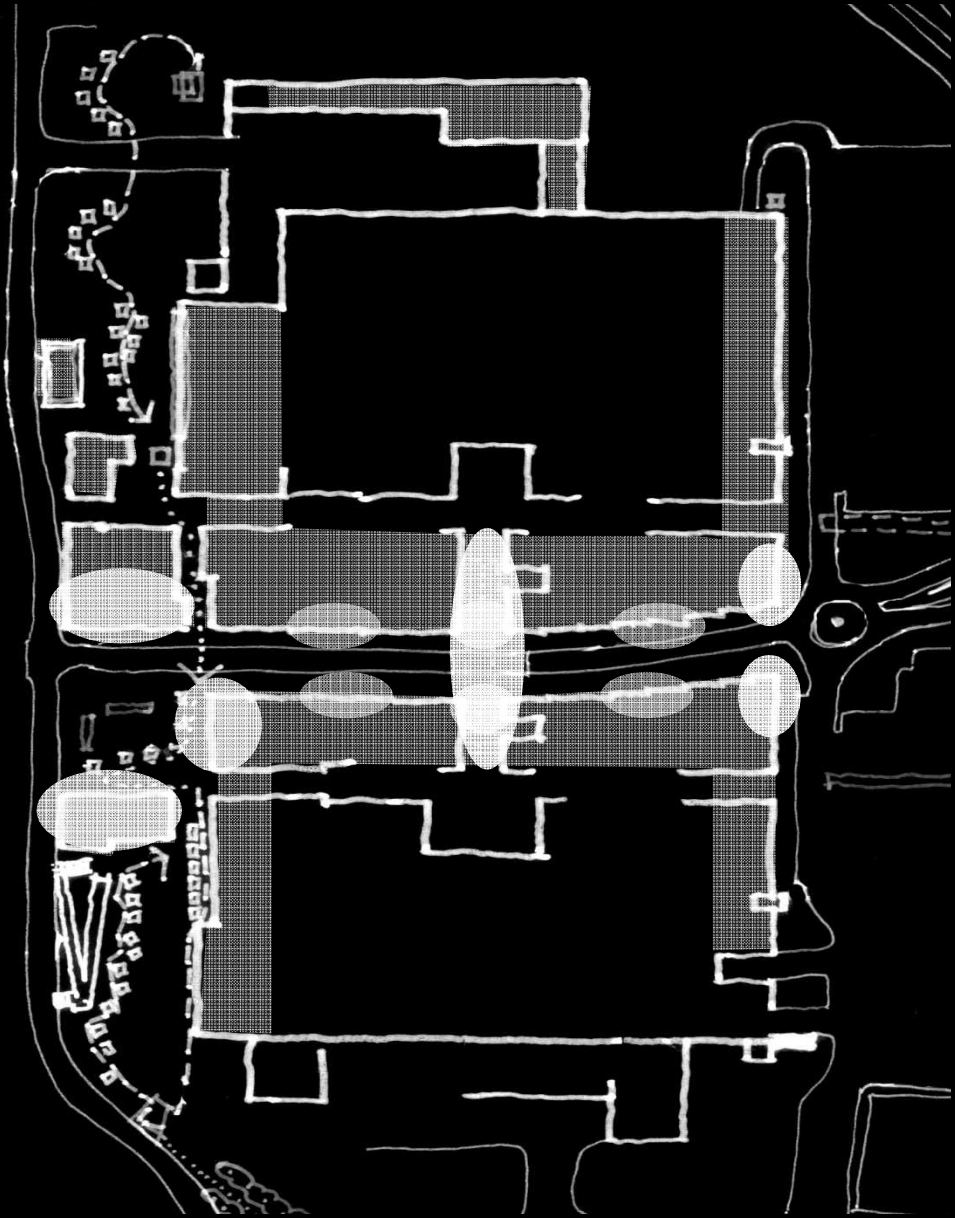
Filtered / dappled
Experience it
Integration + highlight building experiences

Dominant roof expression
– simple + effective architectural expression

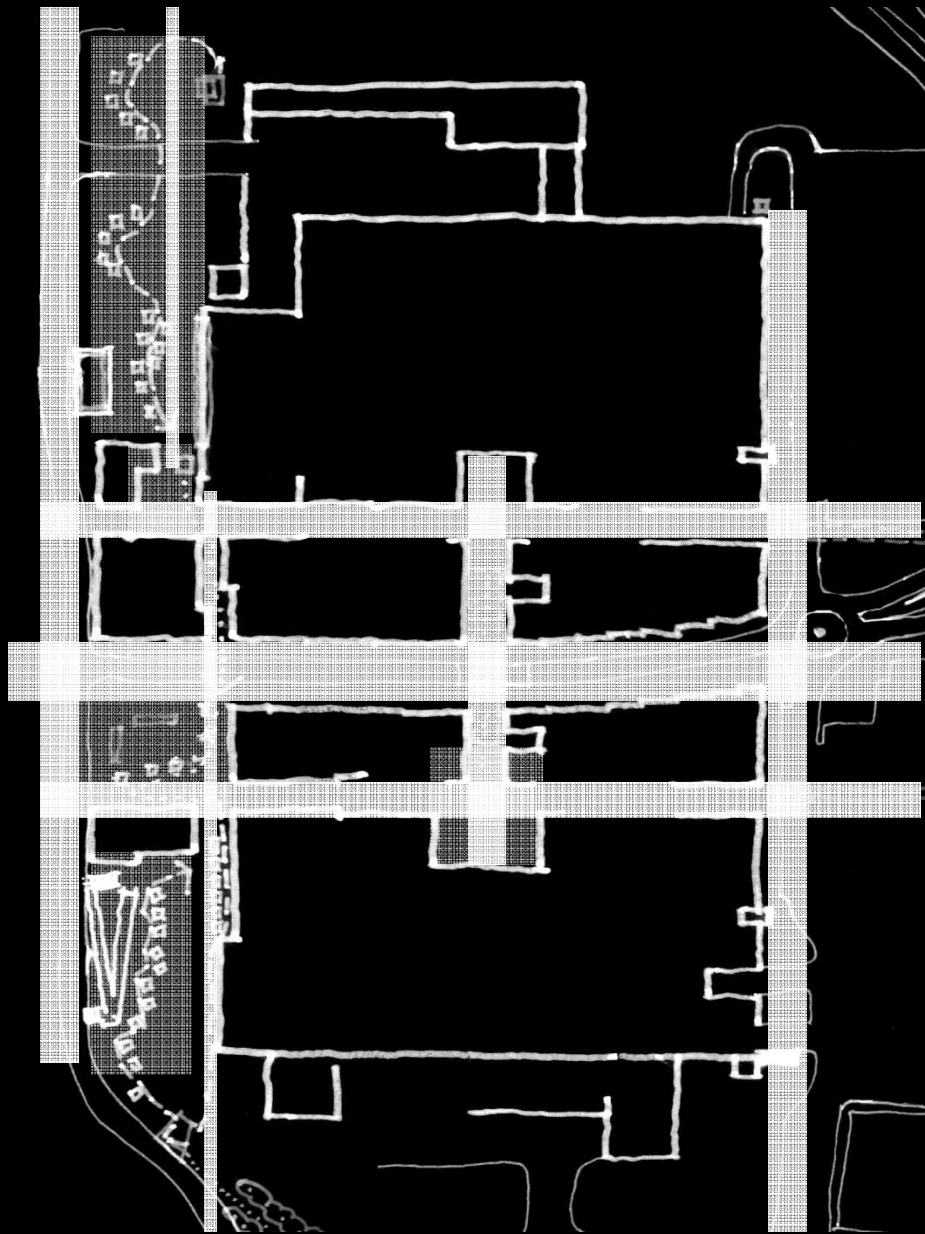
Blur indoor / outdoor spatial qualities

Expressive + simple awning device
for scale, entries, facade articulation

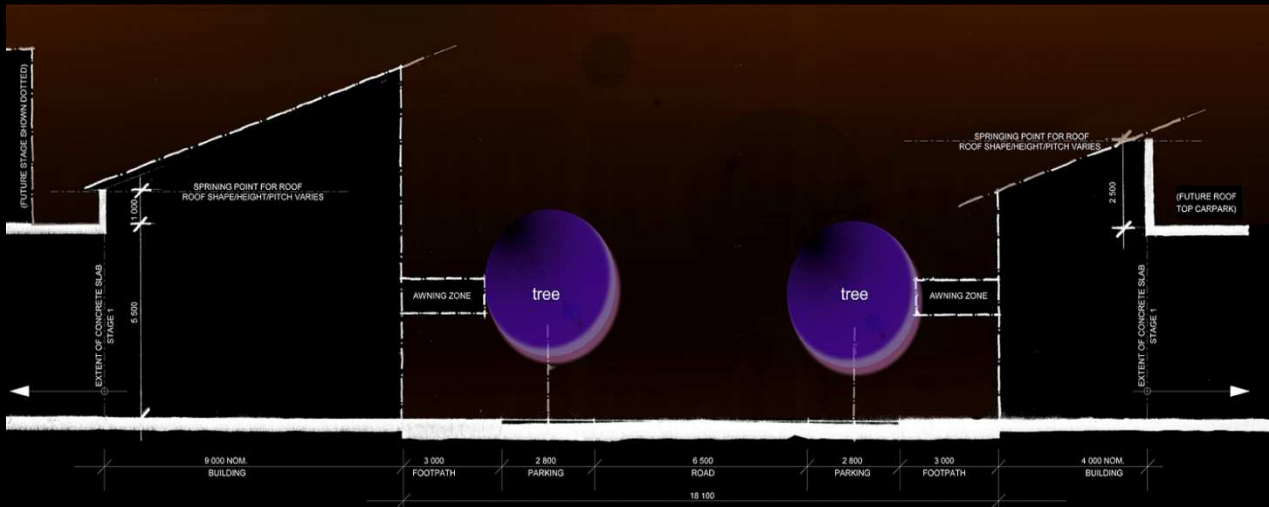
Express sectional qualities – light / ventilation



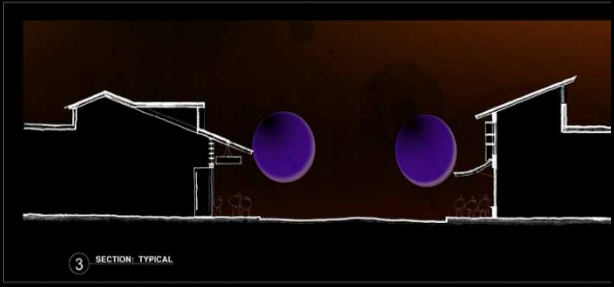
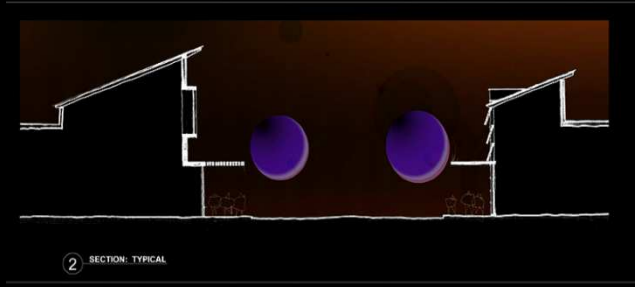
[ORION, SPRINGFIELD]



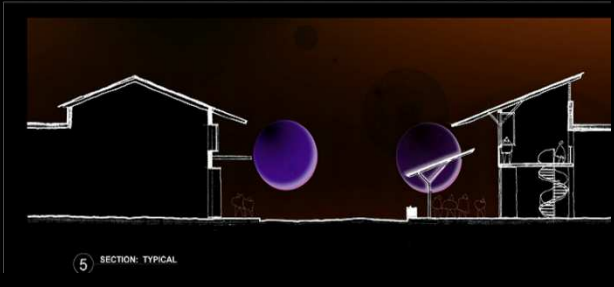
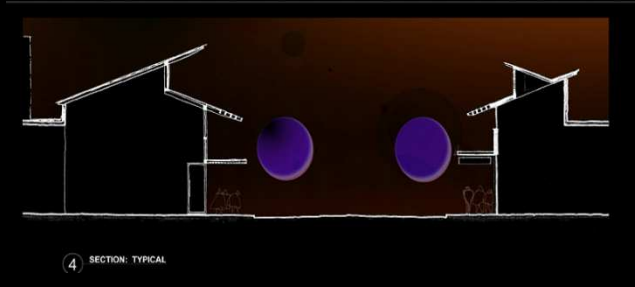
[ORION, SPRINGFIELD]



1 SECTION: PARAMETERS



POSSIBLE BUILDING TYPES TO MAIN STREET





[ORION, SPRINGFIELD]



[ORION, SPRINGFIELD]



[ORION, SPRINGFIELD]



[ORION, SPRINGFIELD]



[SOVEREIGN HILLS, NSW]



[SOVEREIGN HILLS, NSW]



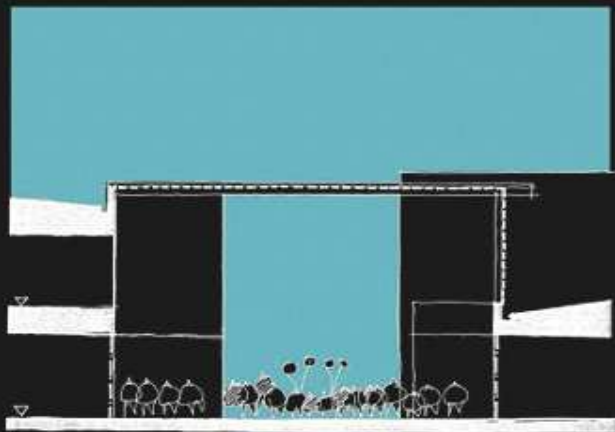
[SOVEREIGN HILLS, NSW]



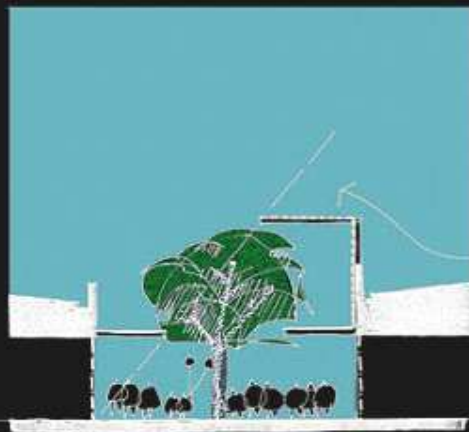
CONNECTION



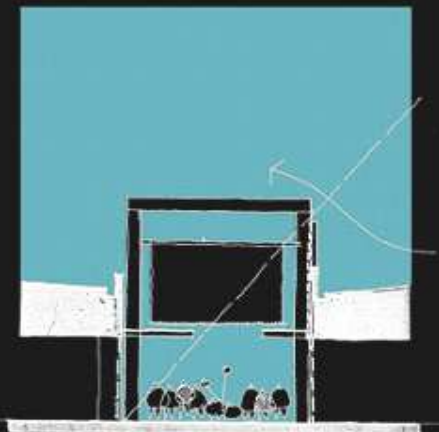
ROUSE HILL, NSW



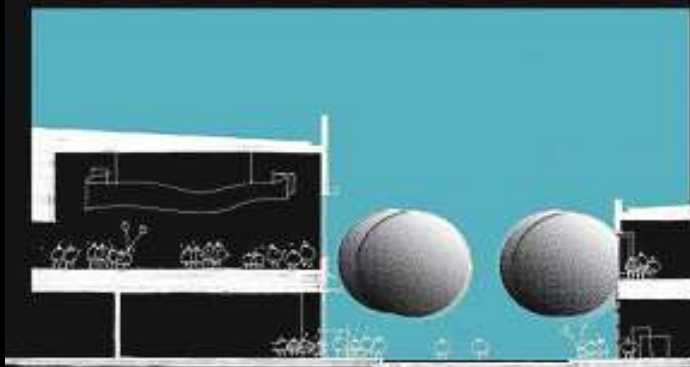
B
QUADRANTS
LOOP.



C
QUADRANTS
LOOP.



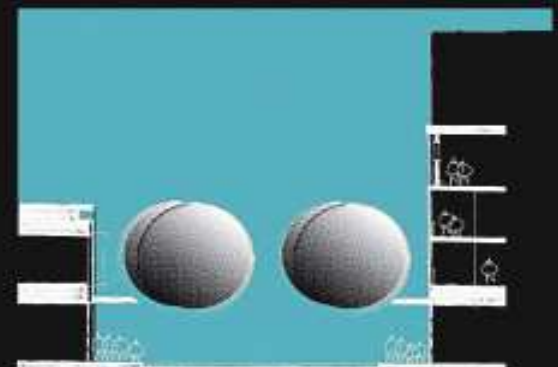
G+D
QUADRANTS
LOOP.



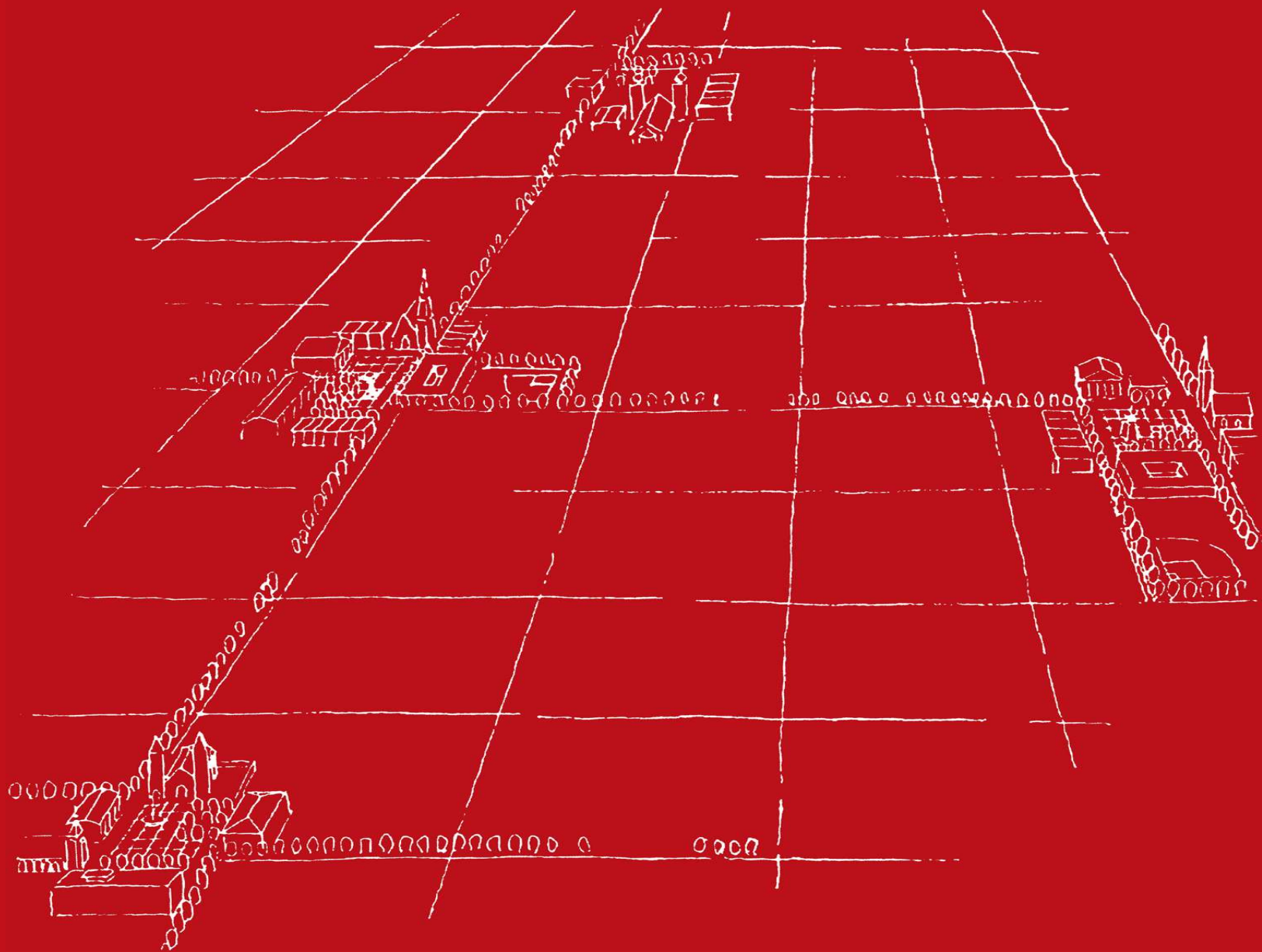
CHISMA LOBBY
MAIN STREET



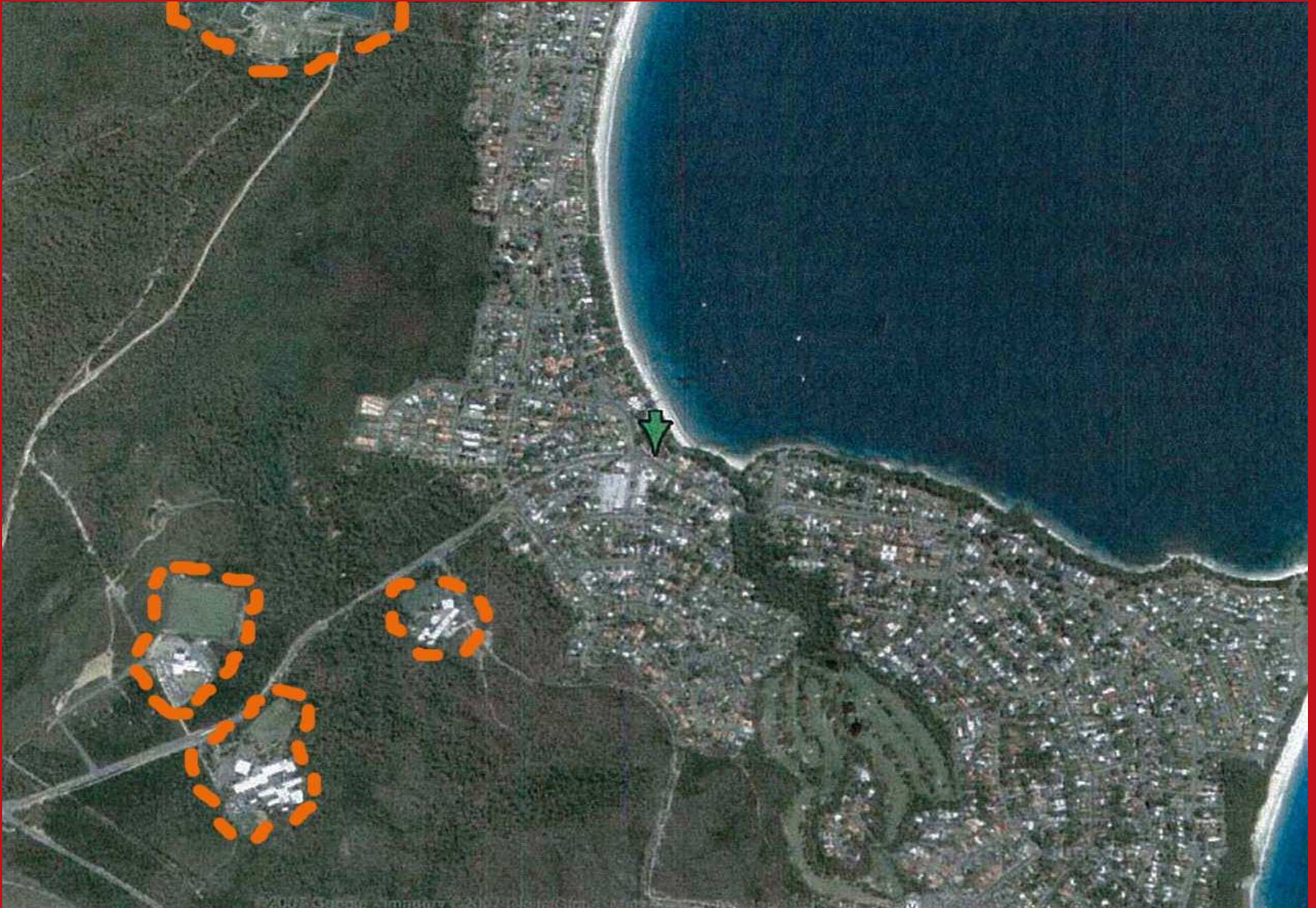
BOUSATION
MAIN STREET (ENTRANCEWAY)
RPS



BOUSATION
MAIN STREET (NORTH OF MAIN WIND)
RESIDENTIAL

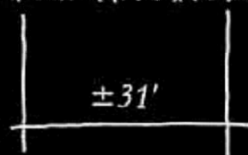
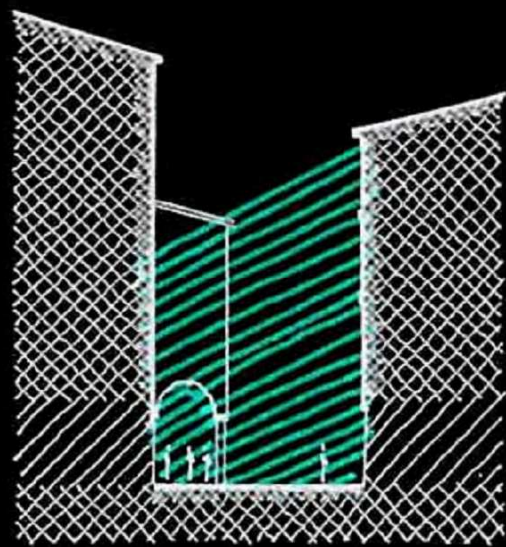


[VINCENTIA]

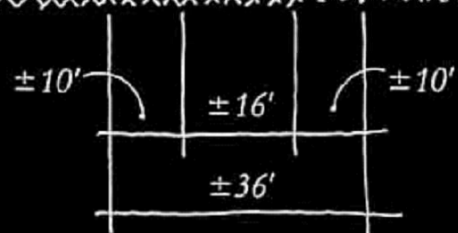
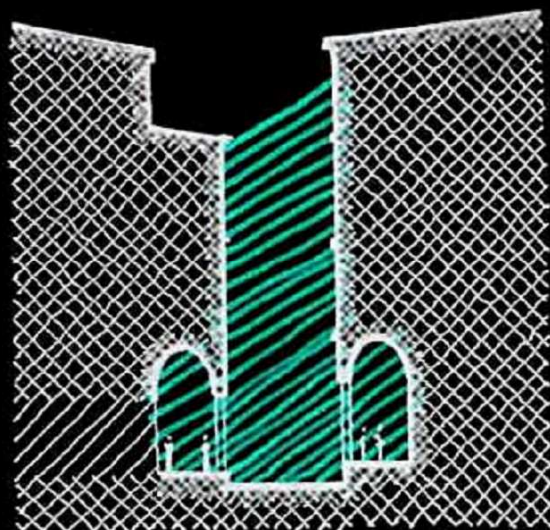


[VINCENTIA]

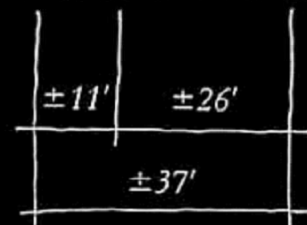
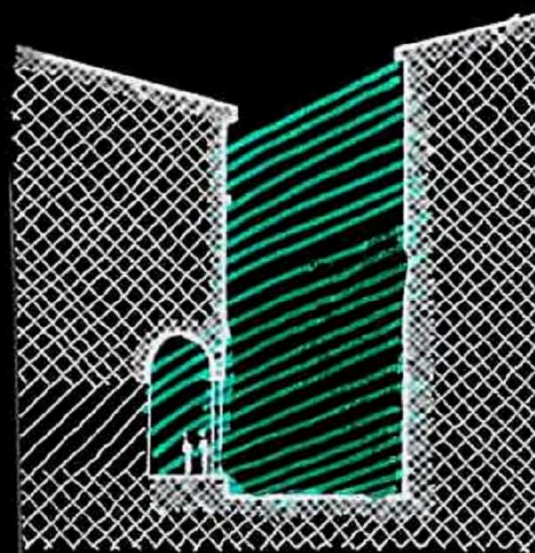




Via Zamboni

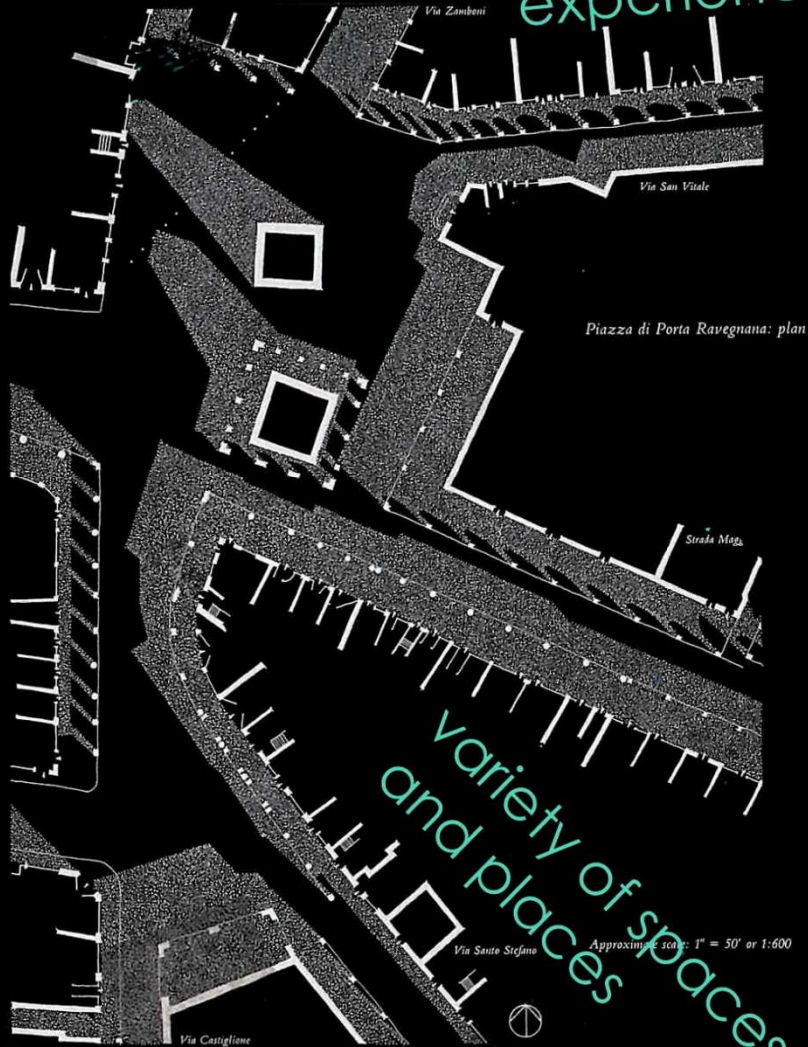


Via Castiglione



Via Santo Stefano

discovery +
experience

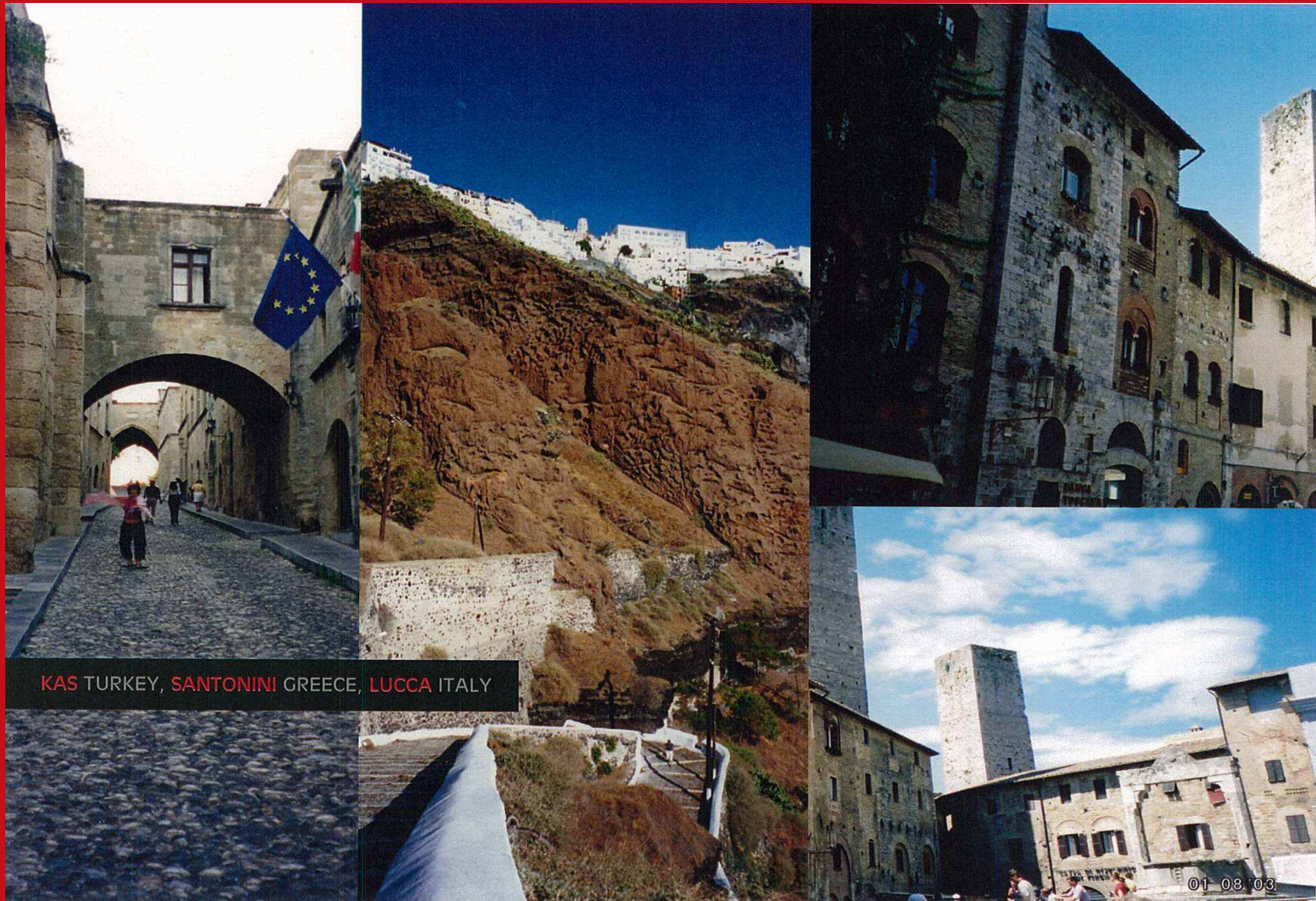


variety of spaces
and places

Approximate scale: 1" = 50' or 1:600

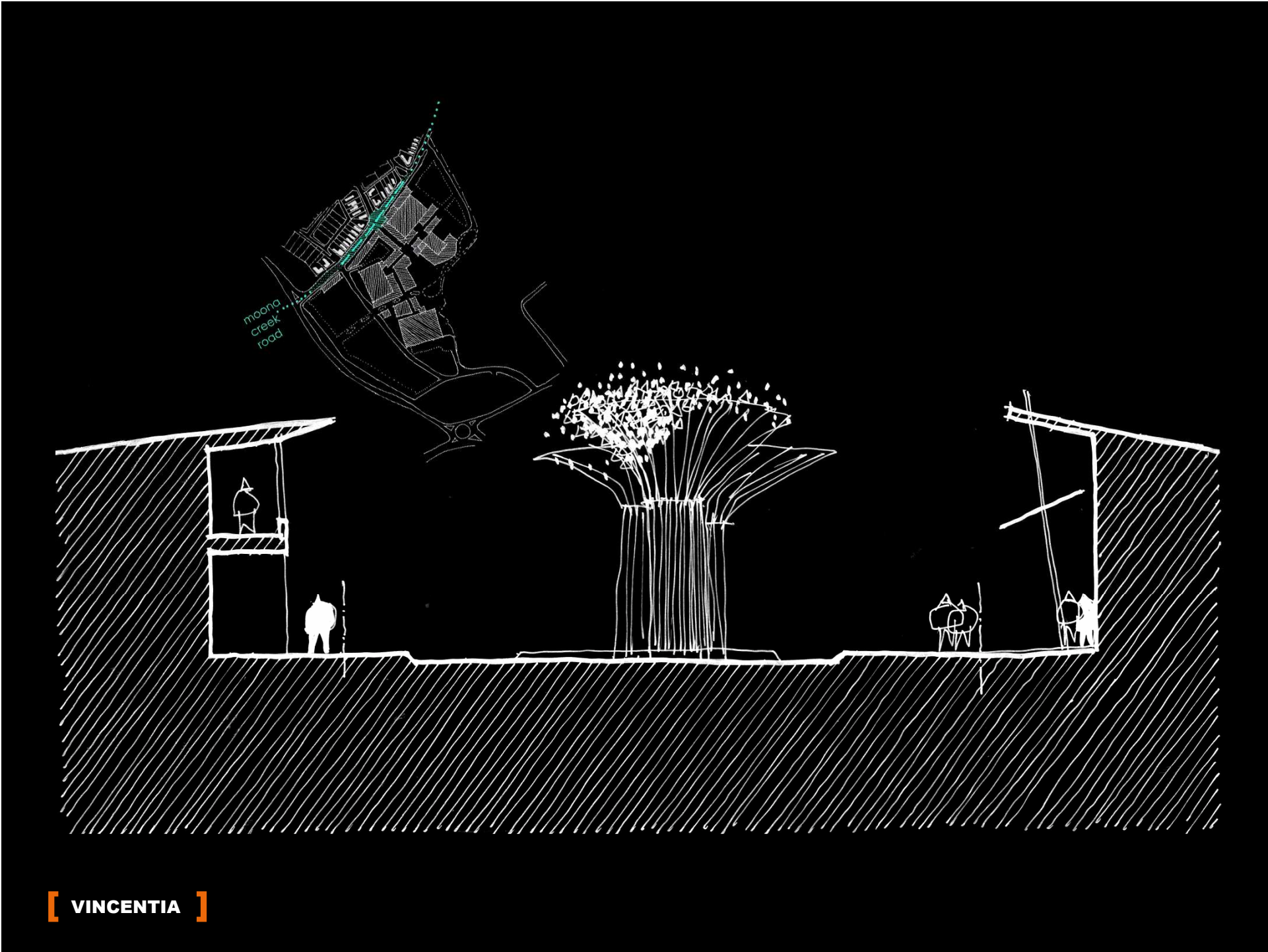


[VINCENTIA]

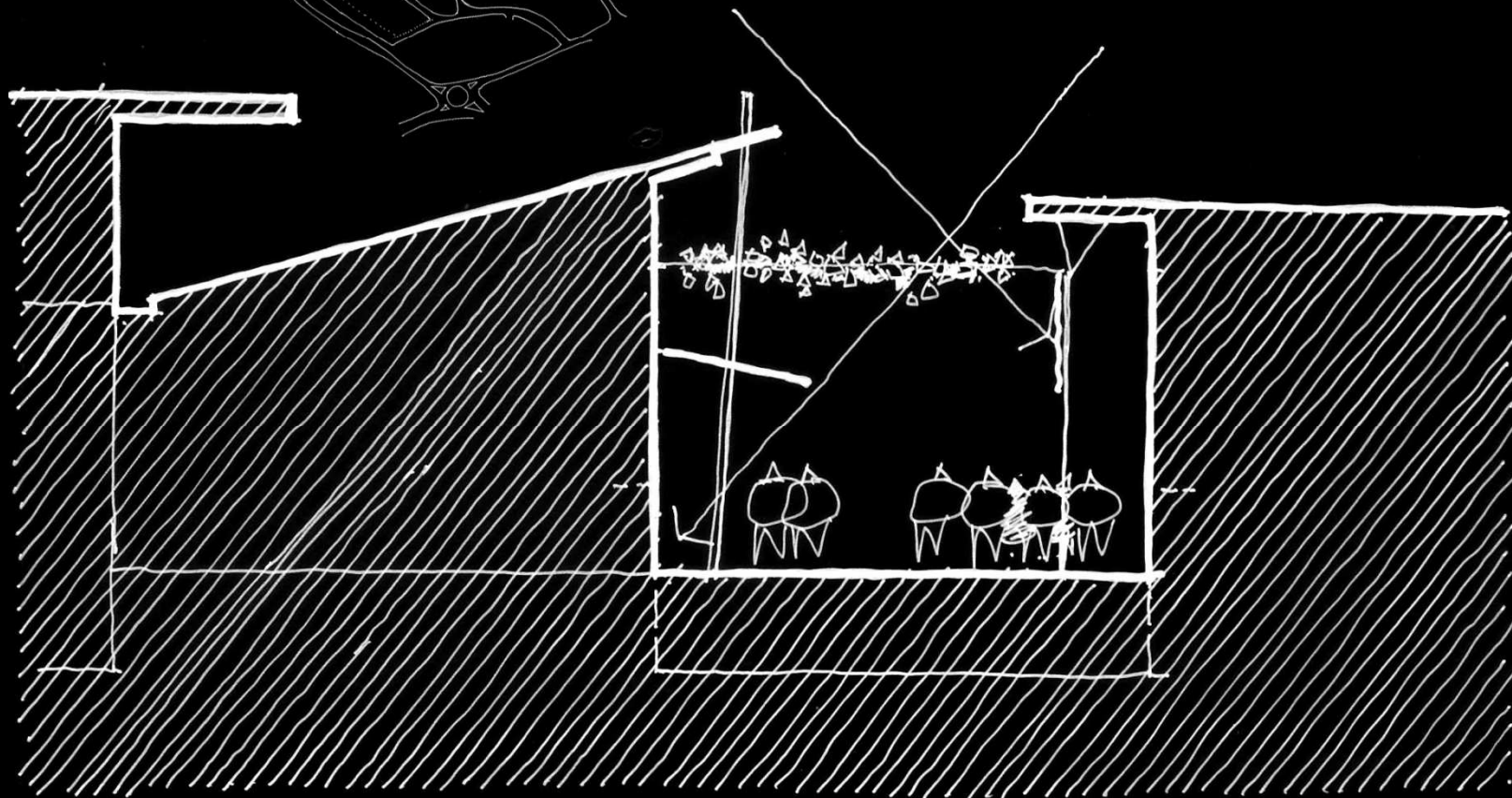


KAS TURKEY, SANTONINI GREECE, LUCCA ITALY



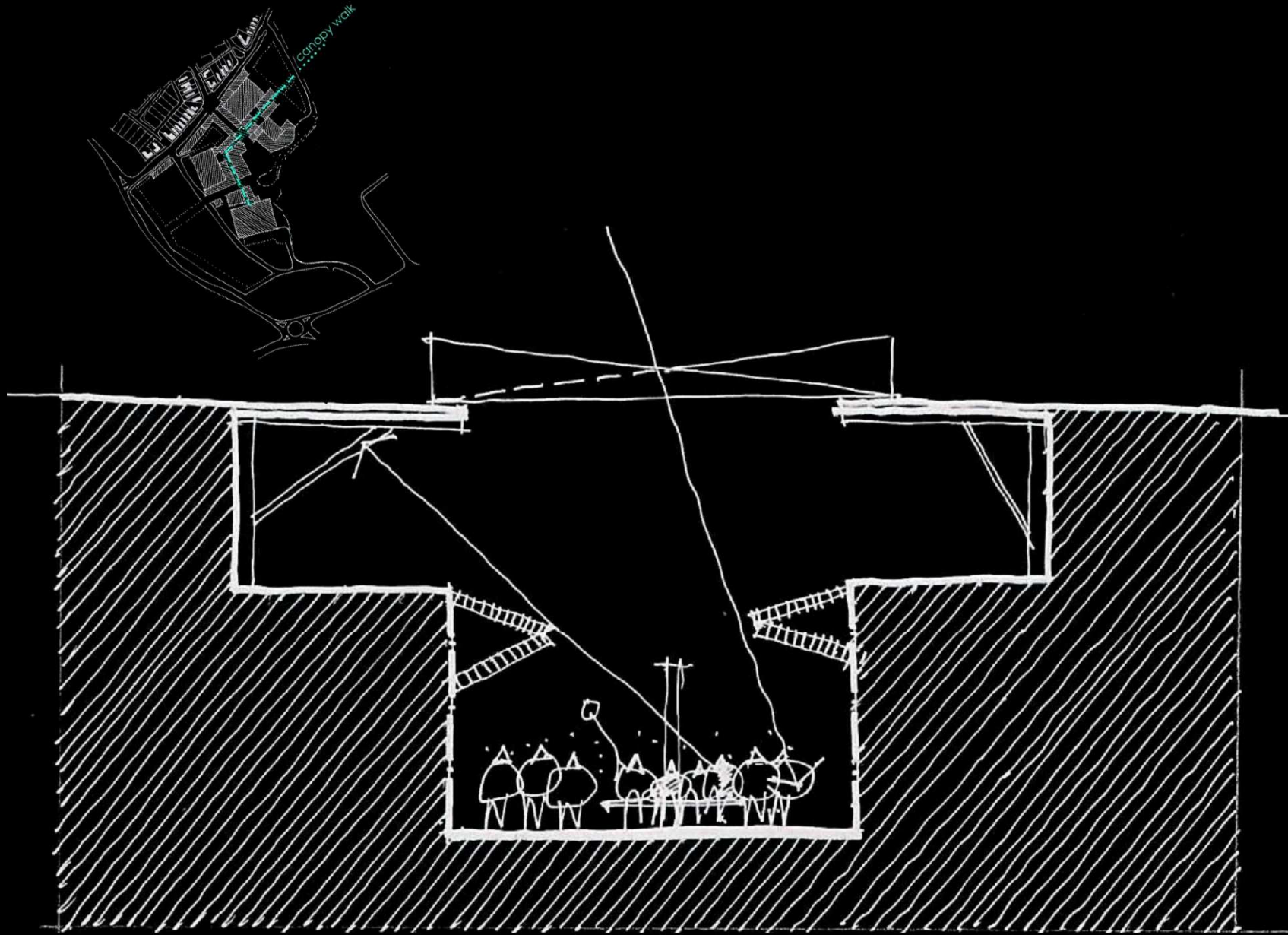


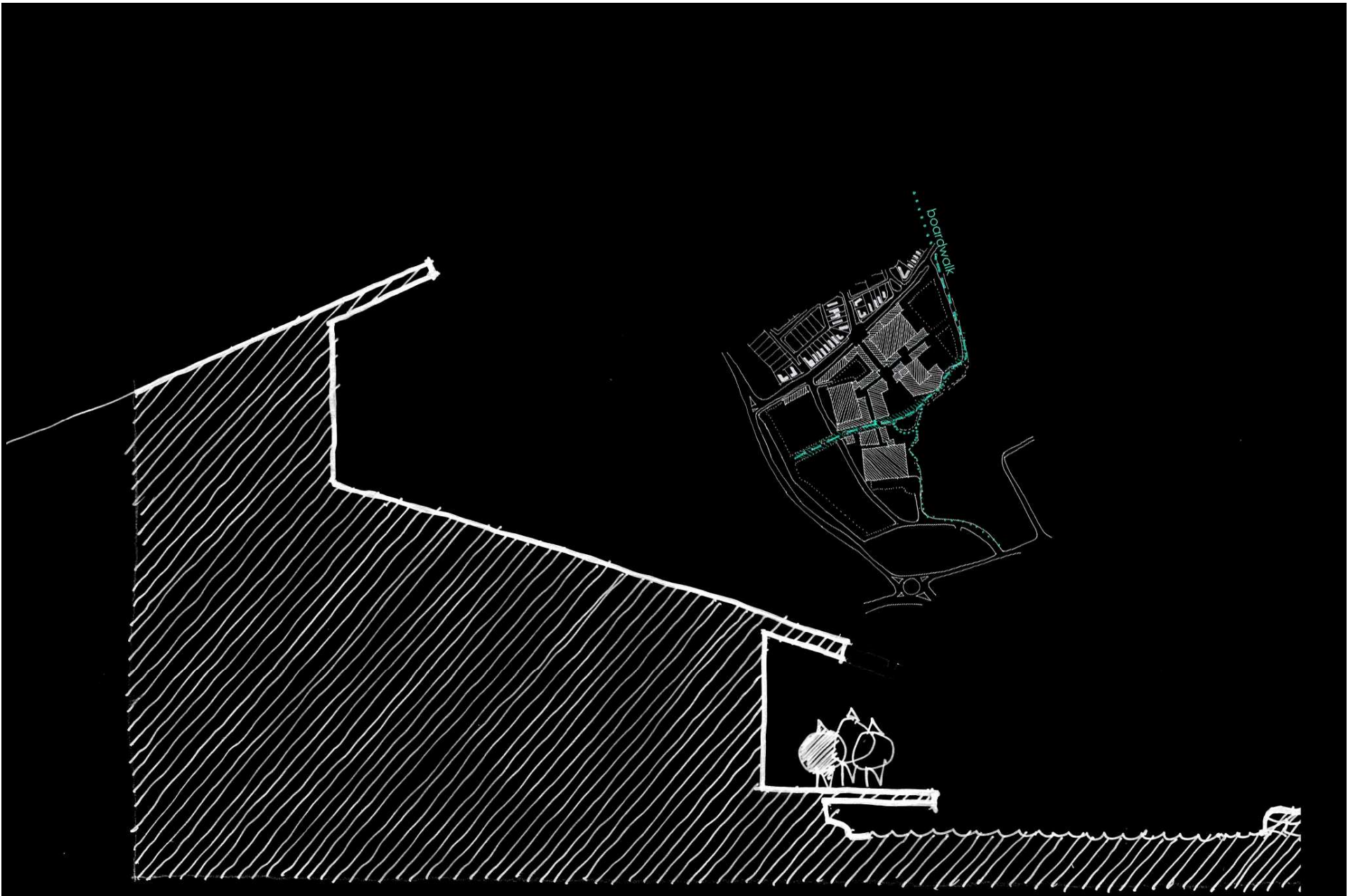






[**VINCENTIA**]

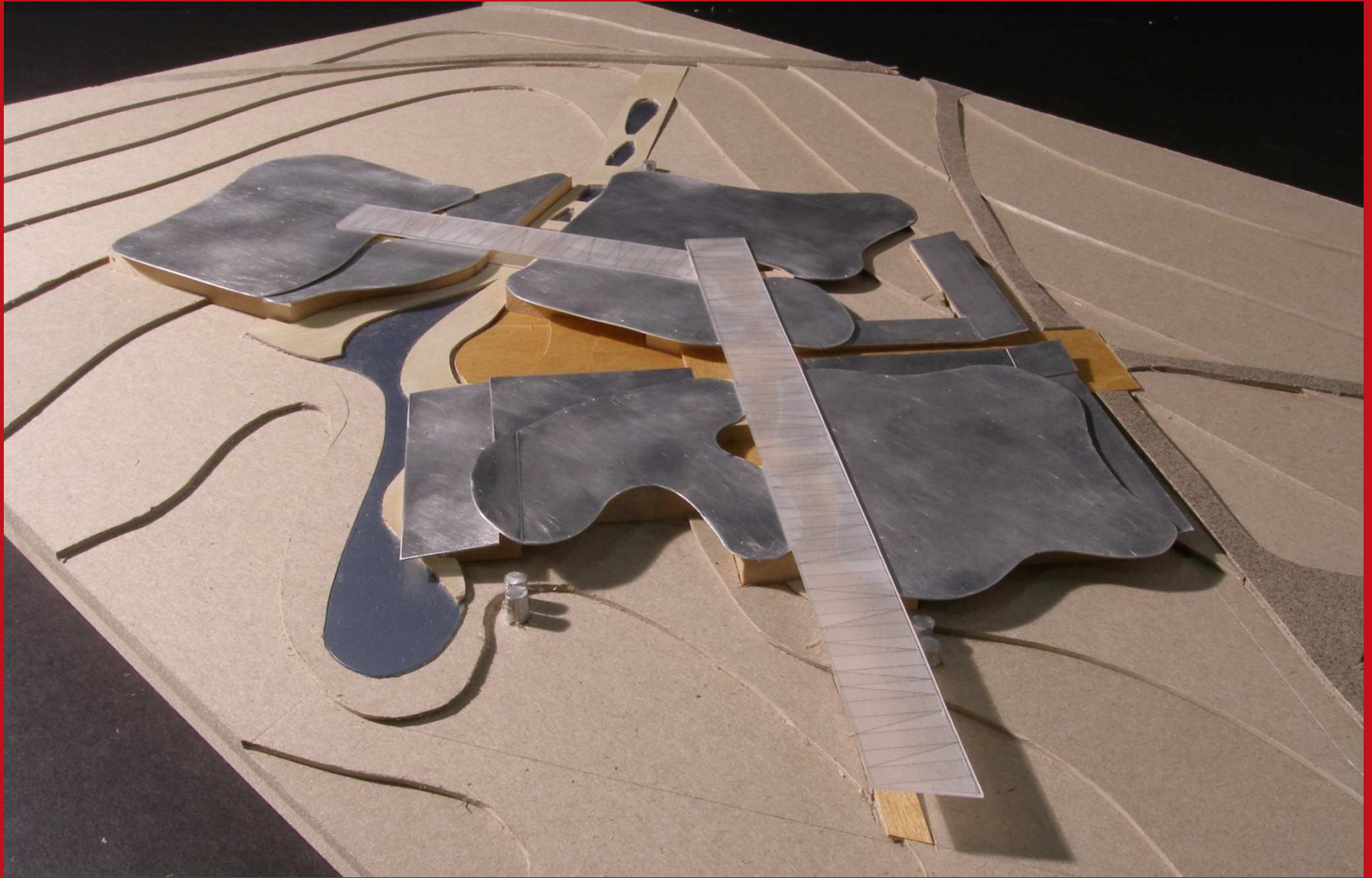









[VINCENTIA]

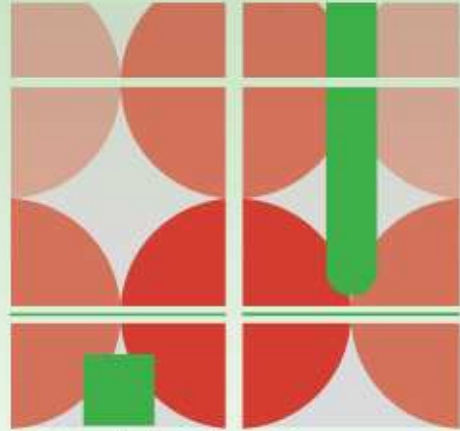


[VINCENTIA]

An aerial photograph of a river delta, showing a network of water channels and sandy, vegetated islands. A prominent light-colored, heart-shaped area is visible in the lower center. A text box is overlaid on the upper left portion of the image.

public space is the great equaliser; gathering places for people from all walks of life; this community orientated role is central to what makes town centres much more than an inside out shopping mall

ACNU08



Brisbane

**2008 NATIONAL
CONGRESS OF THE
AUSTRALIAN COUNCIL
FOR NEW URBANISM**

6th – 9th February, 2008

